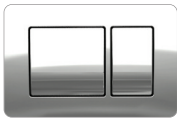


RECTANGULAR

CIRCULAR



CHROME



CHROME



WHITE



WHITE



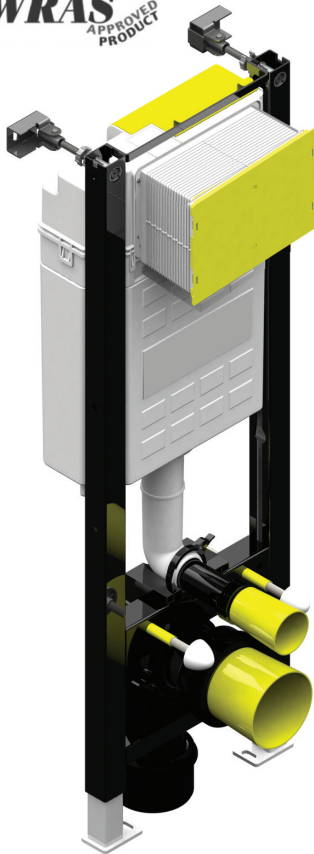
BLACK



BLACK



BRUSHED GOLD



FRONT ACCESS FAST FIX FRAME FOR WALL HUNG WC



APPROVED



HEALTHCARE



COMMERCIAL



DOMESTIC



EDUCATION



HOTEL & LEISURE

PRODUCT INFORMATION

Fastfix frame including pan connectors, cistern with front access dual flush compact cistern and rectangular fascia plate

T074113P43 - with CHROME rectangular plate

T074113P44 - with WHITE rectangular plate

T074113P45 - with BLACK rectangular plate

T074113P47 - with CHROME circular plate

T074113P48 - with WHITE circular plate

T074113P49 - with BLACK circular plate

T074113P50 - with Brushed GOLD circular Plate

FLUSH VOLUME

6/4 or 4/2.6 Litres

MATERIAL

Steel

COLOUR/FINISH

Chrome Fascia Plate

MANUFACTURER

Wilco

FIXING

Secure to floor and upright structures using fixings provided

STANDARDS

EN 14055

APPROVALS

WRAS Approval pending

PRODUCT DIMENSIONS

W350 x H1100 - 1300 x D135-180mm

WEIGHT

14.56KG

ADDITIONAL INFORMATION

Suitable for use with stud walls where adequate grounds are provided.
Load capacity 400KG.

